

Quick Start Guide



INTRODUCTION

DeltaBlue is a battery-powered, rugged device used for measuring and control in remote areas or installations without access to mains power or a fixed communication line.

Common applications include:

- Well and Pit monitoring
- Tank measurements
- Water and sewer treatment
- Agriculture applications
- Remote alarms
- Lake water level monitoring

FEATURES

- Up to 3 years battery life time* (Depending on settings)
- Integrated 7-channel data logger
- Integrated 2G/3G/4G wireless modem
- Integrated GPS, temperature, humidity and accelerometer
- Pre-configured for the most common sensor types with 3.6V, 5V & 16V power feed.
- Easy access to logged measurements via ETM's IoT Cloud Dashboard (EWO)
- Easy integration to SCADA and telemetry systems

ACCESSORIES



Welcome to your ETM Product

Get started: This guide helps with initial product setup. Need more? Find additional product information by simply scanning the QR code.



Support: ETM offers multiple support options to help you get the most out of your product. You can go onto www.etmiot.com or e-mail support@etmiot.com. If urgent, please call us using the numbers below.

ETM Mätteknik AB (HQ)

Ekbacksvägen 32, 168 69, Bromma, Sweden
 Tel: +46 (0)8 25 28 75 E-mail: sales@etmiot.se
www.etmiot.se

ETM Pacific Pty Ltd (APAC)

Suite 6, 273 Alfred Street, North Sydney NSW 2060, Australia
 Tel: +61 (0)2 9956 7377 E-mail: sales@etmiot.com.au
www.etmiot.com.au

PIN DESCRIPTION

Channel	Color	Dip Switch OFF	Dip Switch ON
1 IO	Brown	DI, Pulse	DI, Pulse Strong Pullup
2 IO	Blue	DI, AI 0-2.5V	AI 4-20mA
3 IO	Yellow	DI, AI 0-2.5V	AI 4-20mA
4 IO	Green	DI, AI 0-2.5V	AI 4-20mA
5 IO	Red	DI, AI 0-2.5V	AI 4-20mA
6 IO	Black	AI 0-5VDC	AI 0-10VDC
7 Feed	Orange	1. 5V Out	2. 16V Out 4. 3.6V Out (Battery)
8 GND	Grey		Signal Ground

LED INDICATOR

Green status LEDs

1	Slow Flash	Searching for network connection
Network	2x Flash 3s Pause	Active 2G network connection
	3x Flash 3s Pause	Active 3G network connection
	4x Flash 3s Pause	Active 4G network connection
2	On	Internet provider connection
IP status	Off	No Internet provider connection
3	On	Receiving data (2s active)
Data Com	Off	No data transmission occurring
	Rapid Flash	Sending Data

Yellow signal strength LEDs

1	Flashing	RSSI < -105dBm or No SIM detected
Poor	On	RSSI ≥ -105dBm (Poor signal)
	Off	Not registered to mobile network
2	Flashing	No SIM detected
Fair	On	RSSI ≥ -89dBm (Fair signal)
	Off	RSSI < -89dBm or not reg. to mobile network
3	Flashing	No SIM detected
Good	On	RSSI ≥ -73dBm (Good signal)
	Off	RSSI < -73dBm or not reg. to mobile network

Getting Started

1. Connecting the hardware

CONNECTING SIM CARD

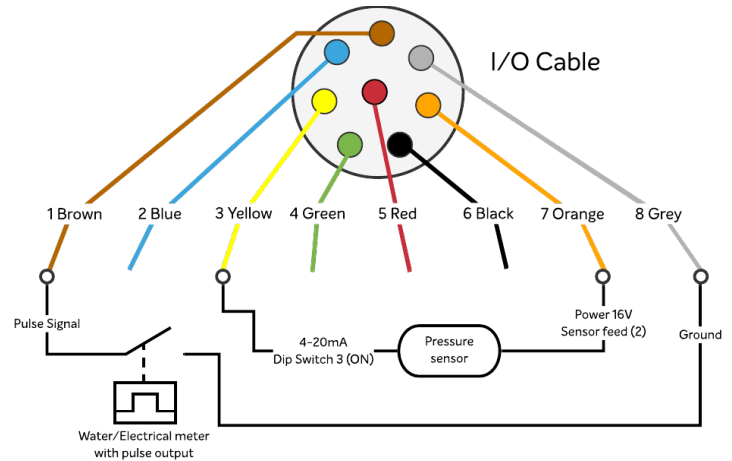


BATTERY AND COMMUNICATION

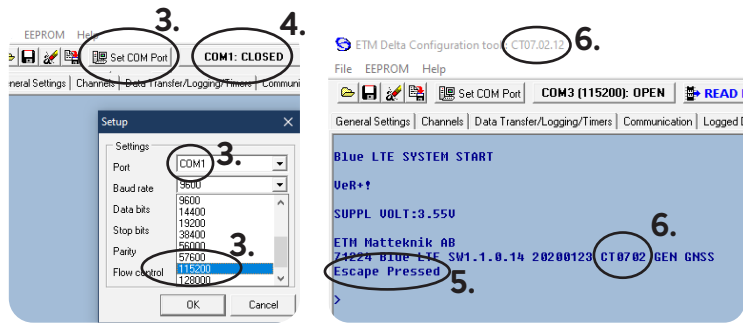


WIRING EXAMPLES

- Water/Electrical meter
- Pressure Sensor

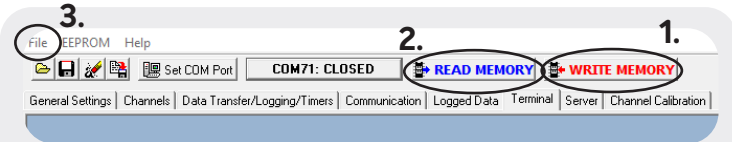


2. CONFIGURATION TOOL



1. Start the configuration tool
2. Connect the unit to your computer
3. Go to the terminal tab, use "Set COM Port" to choose the right COM port (most likely not COM1) and set the baud rate to 115200
4. Open the port by pressing "COM(X): CLOSED"
5. Click anywhere in the blue window until you see a flashing square. Proceed by pressing the "reset" button on the modem, then immediately press "Esc" on your keyboard until the message "Escape Pressed" shows up
6. Make sure that the the firmware matches the configuration tool version like the picture above (6)
7. The unit is now ready to be configured.

3. CONFIGURING THE UNIT



General settings

Used for adding phone numbers, change Unit ID, Clock sync, data formats...

Channel settings

Setting up and configuring alarms on different channels/pins.

Data Transfer/Logging Timers

For data logging/monitoring. Choosing which data the unit will gather and send.

Communication

Specify where the unit should send the data.

1. When done configuring the unit, press the red button "WRITE MEMORY" to upload the configuration to the unit.
2. To see what configuration is already on the unit, press "READ MEMORY" when having the unit connected to the computer to read it onto the configuration tool
3. To save your configuration to use for future units press "File" in the top left corner, then "save" in the dropdown menu, and save it to an optional location.
4. Your unit is now ready to use.

4. EWO (ETM WEB OFFICE)



- Log in using the provided login credentials
- Manage your account, units and organisation in the settings.
- Under settings > configuration choose which data you want to be presented
- Enjoy your ETM product

To access the ETM IoT Cloud Dashboard, please visit the website or scan the QR Code.

www.etmweboffice.com/EWO/pages/login.jsp



ETM PRODUCTS



DeltaBlue

Outdoor and battery-powered remote monitoring, alarming & logging solution



DeltaBlack

Industrial cellular remote monitoring, alarming & logging solution



ETM-Purple

Intelligent cellular 2G/3G/4G with "last gasp"



ETM-770

Cellular Network Monitoring tool Cat M1/NB-IoT 2G/3G/4G